

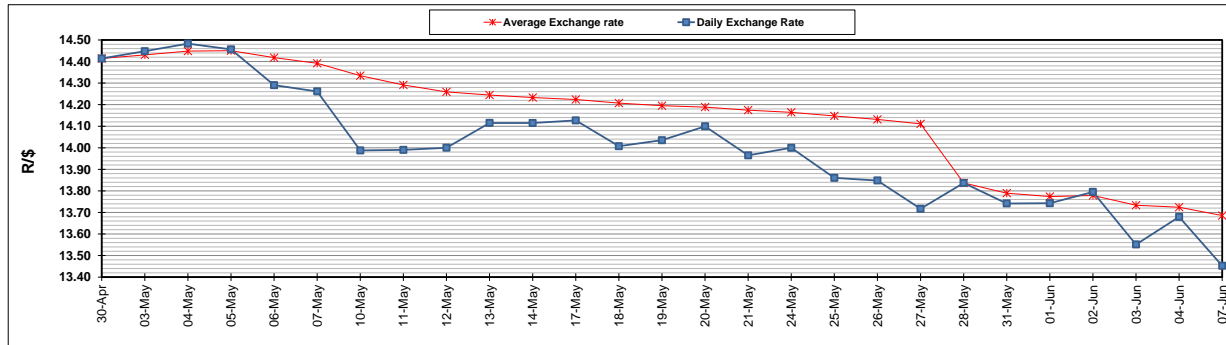
	PETROL 95 ULP	PETROL 93 ULP & LRP	DIESEL 0.05%	DIESEL 0.005%	ILL. PAR.
GAUTENG PUMP PRICE (SA c/l) AS FROM 02/06/2021	1,713.000	1,691.000	-	-	-
WHOLESALE PRICE (SA c/l) AS FROM 02/06/2021	-	-	1,466.620	1,471.020	877.488
SINGLE NATIONAL MAXIMUM RETAIL PRICE	-	-	-	-	1,102.000
BASIC FUEL PRICE - 07/06/2021 (SA c/l)	700.197	692.781	685.586	688.842	661.184
PRESS RELEASE CONTRIBUTION TO BFP 02/06/2021 - 07/06/2021 (SA c/l)	717.170	705.170	679.630	684.030	664.128
UNIT OVER/(UNDER) RECOVERY - 07/06/2021 (SA c/l)	16.973	12.389	(5.956)	(4.812)	2.944
AVERAGE BASIC FUEL PRICE 28/05/2021 - 07/06/2021	708.352	699.670	688.139	692.019	666.936
AVERAGE UNIT OVER/(UNDER) RECOVERY 28/05/2021 - 07/06/2021	13.103	9.785	(17.080)	(16.989)	(11.379)

ANALYSIS MOVEMENT OF AVERAGE OVER/(UNDER) RECOVERY

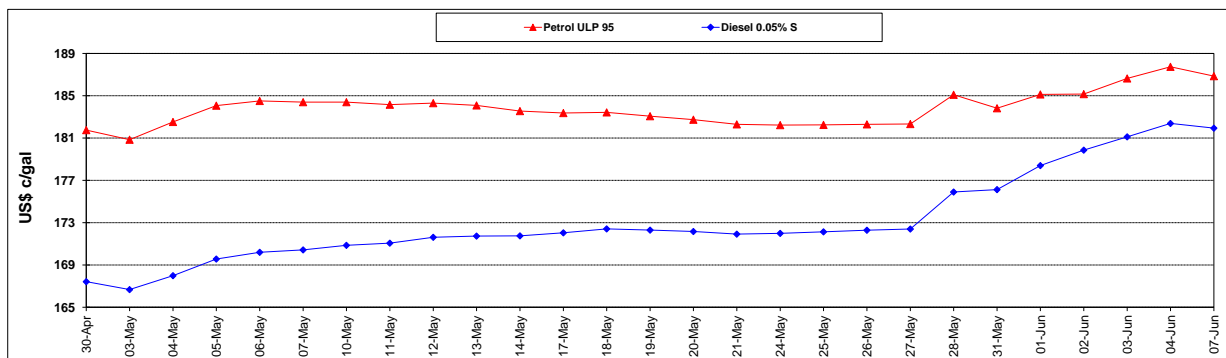
	PETROL 95	PETROL 93	DIESEL 0.05%	DIESEL 0.005%	ILL. PAR.
- MOVEMENT IN INTERNATIONAL PRODUCT PRICES	(8.914)	(11.962)	(38.470)	(38.500)	(32.110)
- MOVEMENT IN EXCHANGE RATE	22.018	21.748	21.390	21.511	20.731
AVERAGE UNIT OVER/(UNDER) RECOVERY 28/05/2021 - 07/06/2021	13.103	9.785	(17.080)	(16.989)	(11.379)

R/\$ EXCHANGE RATE - (R/\$13.4525- 07/06/2021)

EXCHANGE RATE USED IN BASIC FUEL PRICE



INTERNATIONAL PRODUCT PRICES OF BASKET USED IN BASIC FUEL PRICE



BASIC FUEL PRICE IN SA CENTS PER LITRE

